

**Anritsu** envision : ensure

**Azimuth**

# ACE RNX Channel Emulator

## ACE-RNX



## ACE RNX Channel Emulator Features

### Purpose-Built RF Environment Emulator for LTE-A, HetNet, and Beyond

Consumers increasingly demand ubiquitous high-speed access to feed their bandwidth and data-hungry applications. The industry is addressing this through LTE-Advanced (LTE-A), which takes the following new approaches to meet this demand:

- HetNet to improve capacity
- Small cells to expand coverage
- Carrier aggregation to boost data rates

Channel emulation is fine for testing single-link, planned environments with controlled interference, but it's inadequate for testing HetNet — a dynamic, multilink, interference-dominated, and increasingly dense network. For that, you need HetNet environment emulation. Only Azimuth's ACE RNX, with its unique built-in Virtual Network Environment™ (VNE™), fully addresses the technical and logistical challenges of LTE-A testing:

- Testing ICIC, eICIC, FeICIC, NAICS, and advanced interference cancellation receivers
- Prelaunch testing of small cells
- Recreating field environments for debugging
- Regression testing
- Testing builds/configurations before going to the field

#### ACE RNX: Optimized for LTE-A, HetNet, and Beyond

- Multilink support for CA, HetNet, and MU-MIMO
- Addresses technical and logistical challenges of LTE-A testing

#### Industry's Best RF Emulation

- 1 ms playback rate
- Lowest insertion delay
- Highest output power
- Widest dynamic range
- Dynamic uplink noise
- Internal splitting and combining

#### Most Powerful Test Executive

- Optimized for multilink testing
- Intuitive GUI to develop complex test scenarios and scenarios
- Cloud architecture to maximize testbed utilization



# ACE RNX Channel Emulator Functions

## Virtual Network Environment (VNE™)

### The Industry's First — and Only — HetNet Environment Emulation Capability

Consumers demand ubiquitous high-speed access to feed their bandwidth and data-hungry applications. LTE-A uses network densification/HetNet (a network of cells of different sizes) to meet this demand. One consequence of network densification is increased interference. LTE-A offers many complex and advanced mechanisms (e.g., ICIC, eICIC, FeICIC, NAICS, and advanced receivers) to handle this interference. While these mechanisms and techniques help, they also increase the overall complexity of the system. HetNet fundamentally changes how networks must be tested.

Testing HetNet in the lab requires (1) creating a HetNet environment, and (2) controlling the HetNet environment to run specific test cases. Doing this through traditional means — for example, by using real eNBs or signal generators as interferers — is rarely practical due to costs and the complexity of the test-bed.

Virtual Network Environment™ (VNE™), available within the RNX platform, is the first and only solution capable of creating and controlling a complete HetNet radio environment in the lab. VNE™ provides a configurable, synchronized\* LTE downlink (i.e., eNB) interferer within the RNX. Designed to include a fading channel, each interferer can be configured to be independent of the others.

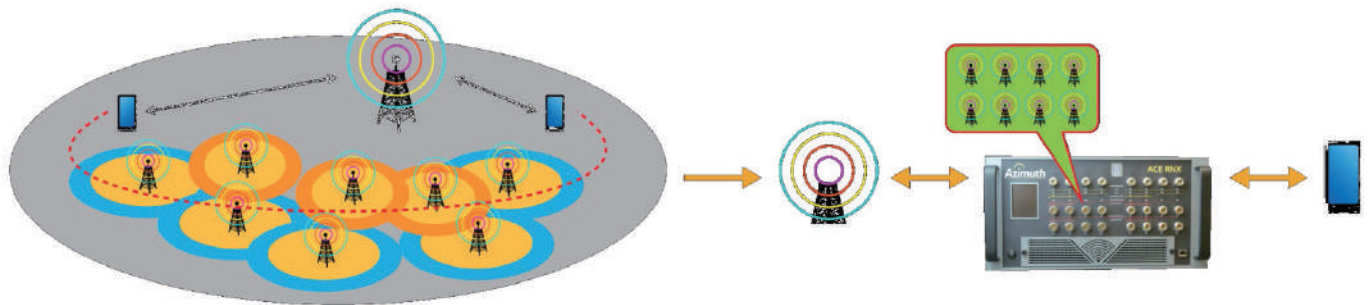
\*: Synchronization is critical since testing time-based mitigation schemes such as ABS (almost blank subframes) requires subframe-level synchronization.

### VNE™

- Industry's first advanced environment emulation
- Fully configurable downlink interferers
- Synchronized with serving cell
- Includes a controllable fading environment and AWGN
- Logistically and technically feasible

### Use Cases

- Testing ICIC, eICIC, FeICIC, NAICS, and advanced interference cancellation receivers
- Pre-launch testing of small cells
- Device qualification, interoperability testing (with device, macro)
- Recreating field environments for debugging
- Regression testing
- Testing builds/configurations before going to the field



# ACE RNX Channel Emulator Functions

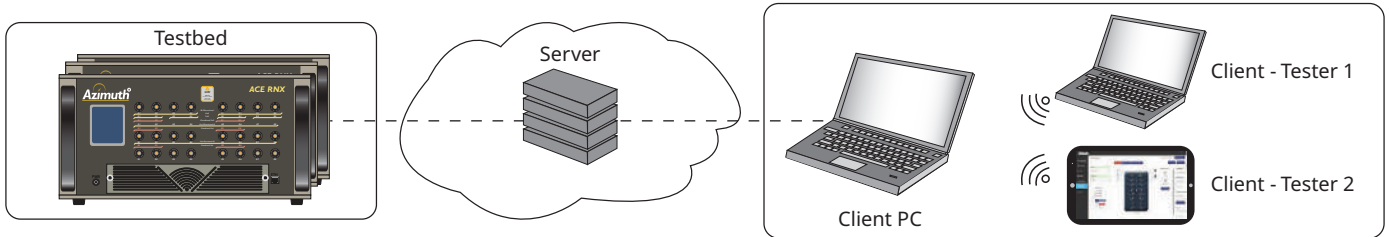
## Director 3 Test Executive (D3)

### Cloud based Test Executive for ease of use

D3 provides a cloud-ready, server-client architecture that facilitates a single server, and multi-client setup. D3 doesn't require desktop software on dedicated PCs, and it's possible to access from any web browser. It means it's possible to access the test bed from anywhere and anytime globally, and it should be better to build test bed and lab space utilization.

The server consists of the following:

- **Server Component** — hosts a responsive and easy to use HTML5 single page application that enables you to create, run and analyze test cases with the ACE-RNX. It also serves as the endpoint for all of the Azimuth SOAP API.
- **Node (Slave) Component** — hosts a dedicated set of engines that stream real-time information to multiple ACE-RNXs.
- **Database Component** — all test cases created are stored in a database that pushes updates to clients and nodes in real time.



The GUI is comprised of user selectable tabs that indicate the states of the test equipment, allow for setup of testbeds, allow for creation of testcases, and let the user run tests with their hardware. Simple operation based GUI should bring efficiency as easy-to-follow and easy-to-use to setup of testbeds, to make scenarios, and to playback testcases. Especially, Scenario Builder is a powerful wizard that graphically create the complex scenarios needed for LTE-A, HetNet, and has following features;

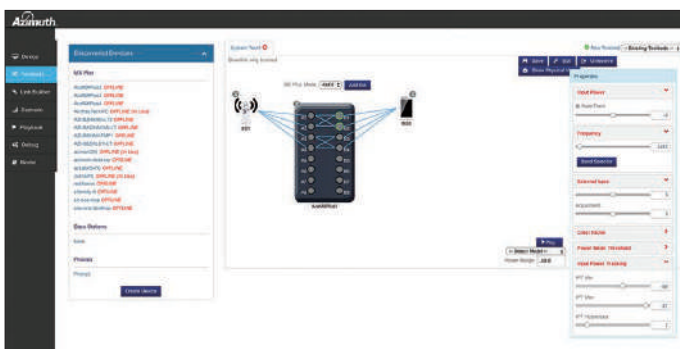
- Drag, drop and design that allows creation of complex scenarios
- Seamless, automatic computation of RF environment (power, channel conditions, etc.) for the defined scenario
- Automatic configuration of the RNX testbed to map to the scenario at hand

### Server Requirements

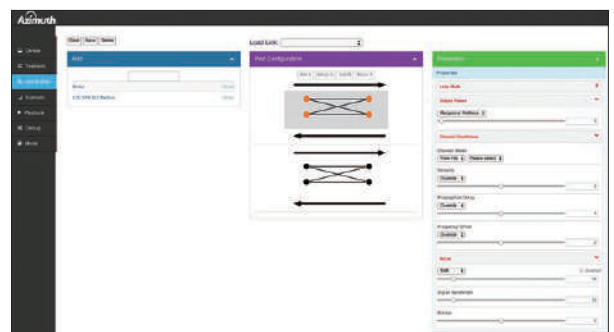
- Desktop PC or server hardware
- Processor: Intel Core i5 64-bit processor or better
- Memory: 8 GB RAM minimum (16 GB recommended)
- Hard Drive: 10 GB free space minimum
- Operating System: the following OS that meets the 64 bit, and English version  
Windows 10 Pro, Windows 10 Enterprise, Windows 7 Professional or Windows 7 Enterprise SPI
- Network: Ethernet 10/100/1000 Adapter
- .NET Framework 3.5 (Windows 10) or .NET Framework 3.5.1 (Windows 7)
- .NET framework 4.6.2
- Microsoft AppFabric 1.1
- Microsoft SQL Server Express 2014

### Client Requirements

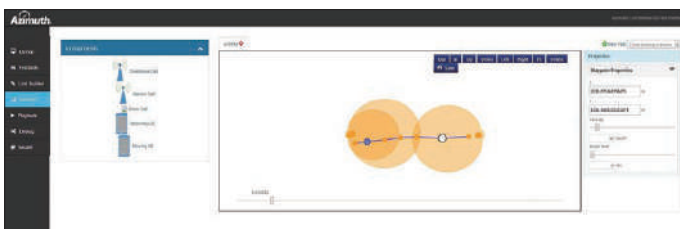
- Microsoft Edge, Microsoft Internet Explorer 11, Google Chrome, Safari 10.0 or later
- Video Resolution: 1600 × 1200 or better (1920 × 1080 recommended)



Testbed Config.



Link Builder



Scenario Builder



Playback

# ACE RNX Channel Emulator Functions

## Field-to-Lab™ (FTL)

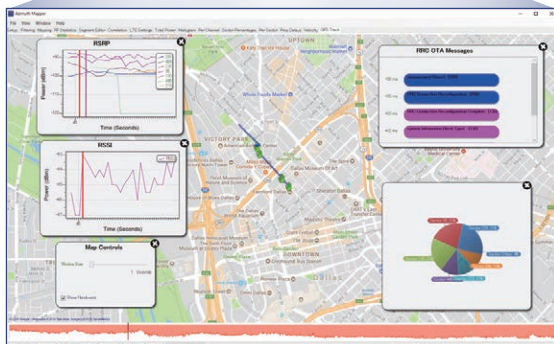
### Roam Globally...In Your Lab

Field testing is the final test for mobile devices prior to deployment to subscribers. It enables validation of the device in real world conditions in the environments where subscribers actually use them. However, field testing of devices in diverse conditions of terrain, population density, physical location and motion is extremely time-consuming and costly. The Azimuth Field-to-Lab (FTL) solution is a unique and effective solution that allows service providers and equipment manufacturers to take real world channel conditions collected from drive testing and re-create the same channel conditions in the lab using the ACE RNX Channel Emulator.

The need for a tightly knit end-to-end progression with significant synergy between one stage and the next has never been more relevant. A key enabler of this new testing paradigm is the ability to reliably and repeatedly recreate dynamic field environments in the lab.

### Field-to-Lab Testing Has Never Been Easier or More Cost-Effective

Standard channel models are often used for standards-based testing. Although these statistical representations of channel conditions are very useful in equipment testing, certification and benchmarking, they do not represent the full range of dynamic field conditions experienced by a device in the real world. The Azimuth Field-to-Lab solution easily integrates actual drive test scan logs into the testbeds used in carrier and equipment vendors' labs. "Golden drive test routes" can be driven virtually, whenever needed.



### Field-to-Lab Integration with Azimuth's Solution Portfolio

The core functionality for Field-to-Lab, integrated with Azimuth's scalable solutions, delivers unrivaled device testing.

- Real-World Applications — With real infrastructure (eNB or BSE), re-creates external conditions in the lab; enables interoperability, regression, network optimization, and performance testing across the full spectrum of dynamic radio environments
- Reciprocal Path Loss (RPL) — With dynamic RPL, FTL allows users to assess the impact of dynamic uplink channel conditions on overall device performance using current drive test scanner logs
- Device Automation and Control — FTL integrates Azimuth DAC for fully automated device application testing and performance benchmarking — including video streaming such as YouTube — while other apps run concurrently
- Can automate different test-bed components, including logging tools, emulators, and results analysis to re-create a complex field environment in the lab

### AzMapper

The mapping function is a crucial component of the Field-to-Lab solution. Various field data of different qualities and accuracy are analyzed and used to generate a playback file. First, the field data is filtered to extract the useful and significant data from the mass of collected information. Next, the data is smoothed, making sure the playback faithfully imitates the time-varying nature of the real world. Finally, the data is analyzed for missing segments; these can be filled or closed with interpolated data to ensure continuity. All the parameters of the filtering and mapping are configurable to the user's preference.

### Playback

The most important part of the FTL solution is ensuring that the playback data is regenerated in the channel emulator in a way that authentically re-creates real-world conditions. The ACE-RNX supports real-time streaming of playback files for unlimited playback to channels on one or more ACE RNXs. Easy-to-use controls allow the data to be played back, paused, looped, and even coupled with other playback files, using both the graphic user interface or the programmable scripting interface.

### Sourcing Field Data

Traditionally, drive tests are performed with commercial products that use real handsets and radios to collect field condition data and analyze the scenario through postprocessing. The raw data collected contains detailed information that can be used to map the conditions in time and, using the Azimuth AzMapper application, re-create these conditions for playback. Azimuth FTL interfaces with a wide range of commercial scanners.

### Supported Technologies

LTE (FDD, TDD), TD-SCDMA, UMTS (W-CDMA, HSPA+), CDMA (CDMA2000, EVDO), GSM

### Supported Scanners/DM

Hardware Scanner:

JDSU E6474A-W1314A

Software Scanners/Diagnostic Monitors:

QXDM

Accuver XCAL

# ACE RNX Channel Emulator Specifications

## ACE RNX Channel Emulator

### Channel Emulation Specifications

Digital Channels	32
Taps per Channel	24
Max Doppler Rate	2.0 kHz
Playback Rate	1 ms
Doppler Profiles	Classical
AWGN	+35 to -30 dB SNR, 0.1 dB
Channel Models: Model Packs	Industry standards models: <ul style="list-style-type: none"> <li>• 3GPP/3GPP2 5G/LTE/3G/2G channel models</li> <li>• WiMAX Forum channel models based on ITU M.1225</li> <li>• 3GPP, SCM (spatial channel model for MIMO simulations) and TDL channel models</li> <li>• SCME channel models for linklevel extended SCM modes</li> <li>• IMT-A and SCME-A spatial channel models</li> <li>• High-speed train model scenarios</li> <li>• Moving propagation scenarios</li> </ul>
Custom Model Mode	User-defined custom models
Bypass Mode (Identity Matrix)	No correlation, no fading, no multipath
Butler Mode (Butler Matrix)	No correlation, no fading, no multipath

### Configurations

Test Configurations	<ul style="list-style-type: none"> <li>• 1×1, 2×2, 4×4, 8×4U*1 subsets of these</li> <li>• 8×4B*2, 8×8 subsets of these on 2 ACE-RNX with License</li> <li>• Carrier aggregation</li> </ul>
---------------------	---

★1: U = Unidirectional  
★2: B = Bidirectional

### RF Specifications

RF Channels per RNX	8
RF Bandwidths	100 MHz
RF Input Range	+23 to -50 dBm, with 13 dB Crest factor
RF Input Peak Power	+36 dBm
RF Output Range	-25 to -120 dBm
RF Output Peak Power	0 dBm
RF Tuning Range	380 MHz to 6050 MHz
Insertion Delay	1.1 μs
EVM	< -40 dB typical
Noise Floor, Output	< -166 dBm/Hz @ -40 dBm output power

### Director 3 Test Executive

Scenario Builder	Drag-and-drop wizard to design and execute multilink tests
Link Builder	Link-level GUI to create and run tests
Cloud Architecture	<ul style="list-style-type: none"> <li>• Global access to the test-bed</li> <li>• No desktop software</li> <li>• Centralized test cases and results</li> </ul>

### Physical Specifications

Dimensions	17.45 (W) × 8.75 (H) × 28.5 (D) [44.32 (W) × 22.23 (H) × 72.39 (D) cm]
Mass	98 lb. (44.5 kg)
Power	100 V(ac) to 240 V(ac), 50 Hz to 60 Hz, 8.0/4.0 amps

## Virtual Network Environment (VNE™)

### Capabilities

Interferer	LTE downlink (no uplink)
Unique Interferers Per RNX	12
Interferers Per Link	3
Types of Interferers	Any LTE cell (macrocell, small cell)
<b>Sync Receiver</b>	
Mode	Synchronized (to eNB) or unsynchronized
Input Signal	Nonfaded Power range: -50 to +23 dBm
Capability	Can decode up to 4 eNBs

VNE™ unlocks repeatable, scalable HetNet testing by

- (1) defining interfering cells (through the signal generation tool in Director 3)
- (2) creating a HetNet environment that uses those cells
- (3) developing test scenarios specifically for that environment

VNE™ is integrated into the Director 3 test executive. Users can start with a pre-existing interferer or create an interferer signal with ease, using the signal generation tool. Once the interferer has been created, it can be added to any specific scenario and configured relative to the serving signal (e.g., SIR, delay, frequency offset, etc.).

### Interferer Signals-Link-Level Parameters

Interferer proportion (SIR)	-15 to +40 dB (0.1 dB resolution)
Delay	-1 to 1 s (100 ns resolution)
Frequency	Anywhere within the channel bandwidth
Frequency offset	-100 kHz to +100 kHz (10 Hz resolution)

### Interferer Parameters

Bandwidth	1.4, 3, 5, 10, 20 MHz (or 6, 15, 25, 50, 75, 100 RBs)
Cyclic prefix	Normal, extended
PHICH duration	Normal
Number of eNB antennas	1, 2, 4
Type of eNB array	Uniform linear
PCI (cell ID)	0 to 503
<b>PD SCH</b>	
Transmission mode	1, 3, 4
Traffic loading	0 to 100%
Rank proportion	0 to 100%
ABS pattern	Standard: Patterns 1-7, as per 3GPP 36.101 Custom: User-defined patterns
CFI value	1, 2, 3
<b>Propagation Conditions</b>	
Channel model	Butler, LTE EVA, EPA, ETU
Correlation	Low, medium, high
Doppler/velocity	5, 70, 300 Hz

### EU Standards (CE Marking)

EMC	2014/30/EU, EN61326-1, EN61000-3-2
LVD	2014/35/EU, EN61010-1
RoHS	2011/65/EU

## Ordering Information

### ACE RNX Channel Emulator

Please specify the model/order number, name and quantity when ordering.  
The names listed in the chart below are Order Names. The actual name of the item may differ from the Order Name.

Model/Order No.	Name
ACE-RNX ACE-RNX-6GHZ	<b>Main Frame</b> ACE RNX Channel Emulator ACE RNX Channel Emulator
UPG-RNX-6GHZ	<b>Upgrade Option</b> ACE RNX Channel Emulator 6GHz Upgrade Kit
ACC-293 ACC-234 ACC-235 ACC-236 ACC-237 ACC-238 ACC-239 ACC-240 ACC-241 ACC-242 ACC-243 ACC-244	<b>Standard Accessories</b> ACE MX/MX2 2x2 Connection Pack (x2) Power Cable - US, Canada, Mexico Power Cable - Japan, Taiwan Power Cable - United Kingdom Power Cable - Hong Kong, Singapore, Malaysia Power Cable - Continental Europe Power Cable - Korea Power Cable - China Power Cable - Australia, New Zealand Power Cable - Switzerland Power Cable - Italy Power Cable - Israel
RNX-1200	<b>Hardware Option</b> Advanced Capabilities Expansion Card
D3-1001 D3-1002	<b>Software Module</b> Director 3 Test Executive Remote Client License
D3-1003 D3-1004 D3-1005  D3-1006 D3-1201 RNX-2201 RNX-2202 RNX-3201	<b>Software Options</b> Director 3 Scenario Builder 3D Geometric Modeling Tool 3GPP TR38.900 5G RAN1 Geometric Stochastic Channel Model Pack 3GPP TS38.141-1 5G TDL Channel Model Pack Director 3 Signal Generation & Management Tool LTE DL Signal Generation/Playback License 8x8 MIMO License 8x4 Bi-Directional License
DIR-601 RPE-401L/AC RPE-402 ACC-261 ACC-262 ACC-284 ACC-295 ACC-308 ACC-312 ACC-315 ACC-506	<b>Application Parts</b> AzMapper RadioProof Enclosures RadioProof Enclosures RadioProof - MIMO AP Cable Kit RadioProof - MIMO Laptop Cable Kit 2:1 Combiner ACE MX/MX2 Cable Starter Kit MIMO Amplifier MIMO Connectivity Unit Field To Lab Multi-Unit Connection Kit CLK Synch Cable
SVC-101 SVC-701  SVC-703 SVC-710 SVC-613	<b>Support Services</b> Engineering and/or Training Service per hour Annual Software Maintenance and System Technical Support HW Advanced Replacement Service Return To Factory Repair Evaluation ACE-RNX Calibration Fee

Please contact our sales representative for more details.

● **United States**

**Anritsu Americas Sales Company**

450 Century Parkway, Suite 190, Allen,  
TX 75013 U.S.A.  
Phone: +1-800-Anritsu (1-800-267-4878)

● **Canada**

**Anritsu Electronics Ltd.**

700 Silver Seven Road, Suite 120, Kanata,  
Ontario K2V 1C3, Canada  
Phone: +1-613-591-2003  
Fax: +1-613-591-1006

● **Brazil**

**Anritsu Eletronica Ltda.**

Praça Amadeu Amaral, 27 - 1 Andar  
01327-010 - Bela Vista - Sao Paulo - SP  
Brazil  
Phone: +55-11-3283-2511  
Fax: +55-11-3288-6940

● **Mexico**

**Anritsu Company, S.A. de C.V.**

Bldv Miguel de Cervantes Saavedra #169 Piso 1, Col. Granada  
Mexico, Ciudad de Mexico, 11520, MEXICO  
Phone: +52-55-4169-7104

● **United Kingdom**

**Anritsu EMEA Ltd.**

200 Capability Green, Luton, Bedfordshire, LU1 3LU, U.K.  
Phone: +44-1582-433200  
Fax: +44-1582-731303

● **France**

**Anritsu S.A.**

12 avenue du Québec, Bâtiment Iris 1- Silic 612,  
91140 VILLEBON SUR YVETTE, France  
Phone: +33-1-60-92-15-50  
Fax: +33-1-64-46-10-65

● **Germany**

**Anritsu GmbH**

Nemetschek Haus, Konrad-Zuse-Platz 1  
81829 München, Germany  
Phone: +49-89-442308-0  
Fax: +49-89-442308-55

● **Italy**

**Anritsu S.r.l.**

Via Elio Vittorini 129, 00144 Roma, Italy  
Phone: +39-6-509-9711  
Fax: +39-6-502-2425

● **Sweden**

**Anritsu AB**

Isafjordsgatan 32C, 164 40 KISTA, Sweden  
Phone: +46-8-534-707-00

● **Finland**

**Anritsu AB**

Teknobulevardi 3-5, FI-01530 VANTAA, Finland  
Phone: +358-20-741-8100  
Fax: +358-20-741-8111

● **Denmark**

**Anritsu A/S**

Torveporten 2, 2500 Valby, Denmark  
Phone: +45-7211-2200  
Fax: +45-7211-2210

● **Russia**

**Anritsu EMEA Ltd.**

**Representation Office in Russia**  
Tverskaya str. 16/2, bld. 1, 7th floor.  
Moscow, 125009, Russia  
Phone: +7-495-363-1694  
Fax: +7-495-935-8962

● **Spain**

**Anritsu EMEA Ltd.**

**Representation Office in Spain**  
Edificio Cuzco IV, Po. de la Castellana, 141, Pta. 5  
28046, Madrid, Spain  
Phone: +34-915-726-761  
Fax: +34-915-726-621

● **United Arab Emirates**

**Anritsu EMEA Ltd.**

**Dubai Liaison Office**  
902, Aurora Tower,  
P O Box: 500311- Dubai Internet City  
Dubai, United Arab Emirates  
Phone: +971-4-3758479  
Fax: +971-4-4249036

● **India**

**Anritsu India Private Limited**

6th Floor, Indiqube ETA, No.38/4, Adjacent to EMC2,  
Doddanekundi, Outer Ring Road, Bengaluru - 560048, India  
Phone: +91-80-6728-1300  
Fax: +91-80-6728-1301

● **Singapore**

**Anritsu Pte. Ltd.**

11 Chang Charn Road, #04-01, Shriro House  
Singapore 159640  
Phone: +65-6282-2400  
Fax: +65-6282-2533

● **P.R. China (Shanghai)**

**Anritsu (China) Co., Ltd.**

Room 2701-2705, Tower A,  
New Caohejing International Business Center  
No. 391 Gui Ping Road Shanghai, 200233, P.R. China  
Phone: +86-21-6237-0898  
Fax: +86-21-6237-0899

● **P.R. China (Hong Kong)**

**Anritsu Company Ltd.**

Unit 1006-7, 10/F., Greenfield Tower, Concordia Plaza,  
No. 1 Science Museum Road, Tsim Sha Tsui East,  
Kowloon, Hong Kong, P.R. China  
Phone: +852-2301-4980  
Fax: +852-2301-3545

● **Japan**

**Anritsu Corporation**

8-5, Tamura-cho, Atsugi-shi, Kanagawa, 243-0016 Japan  
Phone: +81-46-296-1208  
Fax: +81-46-296-1248

● **Korea**

**Anritsu Corporation, Ltd.**

5FL, 235 Pangyoyeok-ro, Bundang-gu, Seongnam-si,  
Gyeonggi-do, 13494 Korea  
Phone: +82-31-696-7750  
Fax: +82-31-696-7751

● **Australia**

**Anritsu Pty. Ltd.**

Unit 20, 21-35 Ricketts Road,  
Mount Waverley, Victoria 3149, Australia  
Phone: +61-3-9558-8177  
Fax: +61-3-9558-8255

● **Taiwan**

**Anritsu Company Inc.**

7F, No. 316, Sec. 1, NeiHu Rd., Taipei 114, Taiwan  
Phone: +886-2-8751-1816  
Fax: +886-2-8751-1817